

**Chapter**

**2**

**Location, Distribution, and Density**

**Population Geography 1**

Note: all of the following information in addition to your reading is important.

Where in the World Do People Live and Why?

• Define: demography – \_\_\_\_\_

• Define: population density – \_\_\_\_\_

• Define: arithmetic population density – \_\_\_\_\_

• Define: physiological population density – \_\_\_\_\_

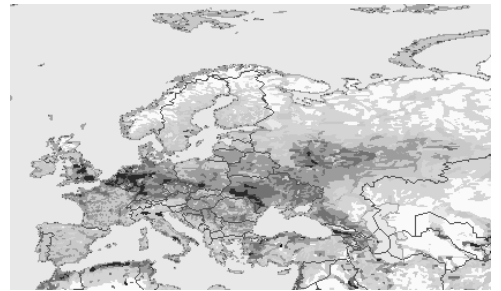
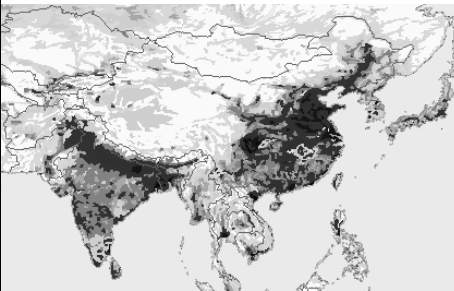
• Look up and define: agricultural population density – \_\_\_\_\_

\*Why differentiate between physiological and agricultural population density?

• Define: population distribution – \_\_\_\_\_

World Population Distribution and Density

• What type of maps are shown below?

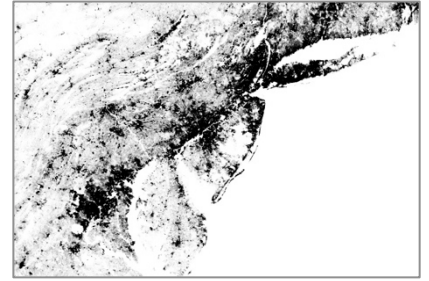


• Describe: the world's largest population concentration – \_\_\_\_\_

• Describe: the world's second largest population concentration – \_\_\_\_\_

• Describe: the world's third largest population concentration – \_\_\_\_\_

• Describe: the world's fourth largest population concentration – \_\_\_\_\_



• Discuss: the reliability of population data [in three sentences or less]:

**Why do Populations Rise or Fall in Particular Places?**

- Who published *The Population Bomb* in the 1960s? \_\_\_\_\_
- Who published *Essays on the Principle of Population* in 1798? What did he write about food production as opposed to human reproduction?



\*Briefly discuss TWO reasons why Malthus' assumptions do not hold true for food production, and TWO reasons why Malthus' assumptions do not hold true for human reproduction: \_\_\_\_\_

Define: Neo-Malthusianism - \_\_\_\_\_